

Linear

Central Vacuum Solutions



Power Units
Tool Kits
Power Heads
Tools, Wands & Brushes
Vacuum Hoses & Hose Accessories
Automatic Dustpans

Wall Inlet Valves & Brackets
PVC Pipe & Fittings
Steel Pipe & Fittings
Installation Accessories
Replacement Parts
Filter & Bag Compatibility Table

Linear Central Vacuum Solutions

An Innovative History



Linear was established in 1961 as a manufacturer of radio controls. Over the next four decades, an unrelenting dedication to quality has turned it into the most trusted name in everyday technology.

Long known for pioneering radio frequency in everyday use, Linear now combines passive infrared detection, digital electronics, and human engineering for a full range of products. Today, Linear opens your gates, your garages, and your front doors. You walk through Linear. You talk through Linear. You trust Linear every day.

Linear's prevalence across America is simply unprecedented. Hundreds of thousands of people use Linear products every day without even knowing it. Backed by the industry's best warranties, a network of qualified integrators and installers, and unrivaled electronic solutions know-how, it's no wonder that Linear continues to lead the industry forward.

Linear combines the latest in technology with simplicity and elegance. From gate operators to intercom systems to high-definition video distribution, these are innovations that are designed to make your life easier. These are innovations that make your life better.

Linear Central Vacuum Solutions

Order Info

Sales Department:

5:00 AM — 4:30 PM (Pacific Time) Monday through Friday.

By Phone: 1 800 421 1587
By Fax: 1 800 468 1340
By Web: linearcorp.com
By Email: sales@linearcorp.com

Technical Support for Dealers & Installers:

5:00 AM — 4:30 PM (Pacific Time) Monday through Friday.

By Phone: 1 800 421 1587
By Fax: 1 760 438 7199
By Web: linearcorp.com
By Email: techsupport@linearcorp.com

These Linear products are available nationwide at hundreds of conveniently located local distributor branches. These innovative products are available where you need them and when you need them, making Linear the natural choice for your central vacuum solutions.

Linear Central Vacuum Solution products are distributed by:

All these brands are now under one name.



Contents

| | |
|---|---------|
| Power Units | 02 – 03 |
| Tool Kits | 04 – 06 |
| Power Heads | 07 – 07 |
| Tools, Wands & Brushes | 08 – 09 |
| Vacuum Hoses & Hose Accessories | 10 – 12 |
| Automatic Dustpans | 13 – 13 |
| Wall Inlet Valves & Brackets | 14 – 17 |
| PVC Pipe & Fittings | 18 – 20 |
| Steel Pipe & Fittings | 21 – 21 |
| Installation Accessories | 22 – 23 |
| Replacement Parts | 24 – 24 |
| Filter & Bag Compatibility Table | 25 – 25 |
| Linear Training | 26 – 26 |
| Technical Support | 27 – 27 |
| Manufacturing Facilities | 28 – 28 |
| Distribution Centers | 29 – 29 |
| Index | 30 – 30 |

02 Power Units

Platinum Series Disposable Bag AirVac Central Vacuums

- AVP3000 (Up to 3,000 square feet, 537 air watts peak, 120 volts)
- AVP7500 (Up to 7,500 square feet, 551 air watts peak, 120 volts)
- AVP12000 (Up to 12,000 square feet, 570 air watts peak, 120 volts)
- AVP24000 (Up to 12,000 square feet, 627 air watts peak, 240 volts)



The Platinum Series Central Vacuum System features a disposable bag central vacuum power unit. The modular design with nested components reduces storage space and shipping costs. The nested design also simplifies handling, installation, and service. Four model sizes are available for installation in homes up to 12,000 square feet. For installation flexibility, both the intake and exhaust ports can be connected from the left or right side. A front-mounted utility port allows easy connection of a hose directly to the power unit for local cleaning. The vacuum's control panel has a power switch, 4-color bag debris level display, 2-color service indicator, and a service reset button.

The power unit's permanent fabric filter provides filtration down to 0.1 micron in diameter. The slide-gate collar dust bag mounts inside the debris bucket on the bottom of the power unit and holds up to 5.2 gallons of dust and dirt. Two easy-to-access swing-down latches secure the debris bucket and are used to access the dust bag. When it's time for bag replacement, the slide-gate collar on the bag closes to keep the dust and dirt sealed inside.

The central vacuum system's power is controlled through a low-voltage wire that connects to each wall inlet valve. When a central vacuum hose is inserted into the wall inlet valve, two sensing pins in the valve connect to the trigger ring on the hose end. Some hoses have a solid trigger ring that electrically connects the valve's sensing pins whenever the hose is inserted into the valve, which starts the vacuum. Other hoses have a split trigger ring that's connected to a low-voltage control switch in the hose's handle, allowing the operator to control the vacuum unit's power.

A foam-filled muffler is included for installation in the exhaust system piping. The muffler substantially reduces operating noise. Routing the vacuum's exhaust through piping to outside the residence ensures all remaining dust vents outside of the building.

Features:

- High-efficiency 2-stage filtration for superior cleaning
- High air-watt rating while maintaining low operating noise
- 4-Color segmented display shows bag debris level
- 2-Color status indicator shows power and motor life
- Slide-gate collar bag designed for cleaner replacement
- Power unit exhausts outside the living area so dust and dirt do not recirculate
- Hose can plug directly into vacuum at utility port for local cleaning

Platinum Series / Bagged

| Old vs New | Model | Motor Type | Water Lift | CFM | Air Watts | Waste Capacity | Home Sq Ft (Max) |
|------------|-----------------|----------------------|-------------|------------|------------|----------------|------------------|
| Old | BV2000 | 2-Stage, 110V | 111" | 120 | 520 | 3.2 gal | 2,400 |
| New | AVP3000 | 2-Stage, 110V | 123" | 118 | 537 | 5.2 gal | 3,000 |
| Old | FX3000 | 2-Stage, 120V | 136" | 95 | 465 | 11 gal | 3,000 |
| New | AVP3000 | 2-Stage, 110V | 123" | 118 | 537 | 5.2 gal | 3,000 |
| Old | ZX5800 | 2-Stage, 110V | 107" | 112 | 404 | 11 gal | 3,000 |
| New | AVP3000 | 2-Stage, 110V | 123" | 118 | 537 | 5.2 gal | 3,000 |
| Old | ZX6000 | 3-Stage, 110V | 136" | 95 | 465 | 11 gal | 7,500 |
| New | AVP7500 | 2-Stage, 110V | 131" | 118 | 551 | 5.2 gal | 7,500 |
| Old | ZX7000 | 3-Stage, 110V | 146" | 103 | 530 | 11 gal | 12,000 |
| New | AVP12000 | 2-Stage, 110V | 127" | 122 | 570 | 5.2 gal | 12,000 |
| Old | ZX8000 | 3-Stage, 240V | 146" | 103 | 521 | 11 gal | 12,000 |
| New | AVP24000 | 2-Stage, 240V | 137" | 124 | 627 | 5.2 gal | 12,000 |

Red Series

Bagless AirVac Central Vacuum

- **AVR3000** (Up to 3,000 square feet, 537 air watts peak, 120 volts)
- **AVR7500** (Up to 7,500 square feet, 551 air watts peak, 120 volts)
- **AVR12000** (Up to 12,000 square feet, 570 air watts peak, 120 volts)
- **AVR24000** (Up to 12,000 square feet, 627 air watts peak, 240 volts)



The Red Series Central Vacuum System features a bagless central vacuum power unit. The modular design with nested components reduces storage space and shipping costs. The nested design also simplifies handling, installation, and service.

Four model sizes are available for installation in homes up to 12,000 square feet. For installation flexibility, both the intake and exhaust ports can be connected from the left or right side. A front-mounted utility port allows easy connection of a hose directly to the power unit for local cleaning. The vacuum's control panel has a power switch and power indicator.

The power unit's permanent fabric filter provides filtration down to 0.1 micron in diameter. The debris bucket on the bottom of the power unit holds up to six gallons of dust and dirt. Two easy-to-access swing-down latches secure the debris bucket and are used to remove it for emptying.

The central vacuum system's power is controlled through a low-voltage wire that connects to each wall inlet valve. When a central vacuum hose is inserted into the wall inlet valve, two sensing pins in the valve connect to the trigger ring on the hose end. Some hoses have a solid trigger ring that electrically connects the valve's sensing pins whenever the hose is inserted into the valve, which starts the vacuum. Other hoses have a split trigger ring that's connected to a low-voltage control switch in the hose's handle, allowing the operator to control the vacuum unit's power.

A foam-filled muffler is included for installation in the exhaust system piping. The muffler substantially reduces operating noise. Routing the vacuum's exhaust through piping to outside the residence ensures all remaining dust vents outside of the building.

Features:

- High-efficiency 2-stage filtration for superior cleaning
- High air-watt rating while maintaining low operating noise
- Power indicator
- Bagless design with debris bucket; no bag to replace
- Power unit exhausts outside the living area so dust and dirt do not recirculate
- Hose can plug directly into vacuum at utility port for local cleaning

Red Series / Bagless

| Old vs New | Model | Motor Type | Water Lift | CFM | Air Watts | Waste Capacity | Home Sq Ft (Max) |
|---------------|-----------------|----------------------|---------------|------------|--------------|-------------------|---------------------|
| Old | AV2500 | 2-Stage, 120V | 107" | 112 | 404 | 6 gal | 3,000 |
| New | AVR3000 | 2-Stage, 120V | 123" | 118 | 537 | 6 gal | 3,000 |
| Old | AV3500 | 3-Stage, 120V | 136" | 95 | 465 | 6 gal | 7,500 |
| New | AVR7500 | 2-Stage, 120V | 131" | 118 | 551 | 6 gal | 7,500 |
| Old | AV4500 | 3-Stage, 120V | 146" | 103 | 530 | 6 gal | 12,000 |
| New | AVR12000 | 2-Stage, 120V | 127" | 122 | 570 | 6 gal | 12,000 |
| Old | AV5500 | 3-Stage, 240V | 146" | 103 | 521 | 6 gal | 12,000 |
| New | AVR24000 | 2-Stage, 240V | 137" | 124 | 627 | 6 gal | 12,000 |

04 Tool Kits

VM4200DS Deluxe SuperSystem Central Vacuum Accessory Package

• ORDER # VM4200DS



The VM4200DS Kit includes the following:

- (1) V610PS Deluxe Central Vacuum Hose
- (1) VM458 14-inch Deluxe Power Brush with Headlight
- (1) VMTC Metal Telescopic Central Vacuum Wand with High-voltage Cord
- (1) VMTE Metal Telescopic Central Vacuum Wand
- (1) VM166 Metal Hose Rack
- (1) VM253 Crevice Tool
- (1) VM256 Upholstery Tool with Brush
- (1) VM252 Floor/Wall Tool
- (1) VM254 Dusting Brush
- (1) VM258 On-board Tool Caddy
- (1) VMCD Deluxe Canvas Tool Caddy

VM2200DS Standard Electric Central Vacuum Accessory Package

• ORDER # VM2200DS



The VM2200DS Kit includes the following:

- (1) V510PS Deluxe Central Vacuum Hose
- (1) VM458 14-inch Deluxe Power Brush with Headlight
- (1) VMTC Metal Telescopic Central Vacuum Wand with High-voltage Cord
- (1) VMTE Metal Telescopic Central Vacuum Wand
- (1) VM166 Metal Hose Rack
- (1) VM253 Crevice Tool
- (1) VM256 Upholstery Tool with Brush
- (1) VM252 Floor/Wall Tool
- (1) VM254 Dusting Brush
- (1) VM258 On-board Tool Caddy
- (1) VMCD Deluxe Canvas Tool Caddy

VM1200S Air-Driven Turbo System Central Vacuum Accessory Package

• ORDER # VM1200S



The VM1200S Kit includes the following:

- (1) V400S Central Vacuum Hose
- (1) VM179 12-inch Air-driven Turbo Brush
- (1) VMTE Metal Telescopic Central Vacuum Wand
- (1) VM166 Metal Hose Rack
- (1) VM253 Crevice Tool
- (1) VM256 Upholstery Tool with Brush
- (1) VM252 Floor/Wall Tool
- (1) VM254 Dusting Brush
- (1) VM258 On-board Tool Caddy
- (1) VMCD Deluxe Canvas Tool Caddy

VMGAR Deluxe Garage/Car Tool Kit

• ORDER # VMGAR



The VMGAR Kit includes the following:

- (1) V222 Central Vacuum Hose
- (1) VMTEP Plastic Telescopic Central Vacuum Wand
- (1) VM253 Crevice Tool
- (1) VM256 Upholstery Tool with Brush
- (1) VM252 Floor/Wall Tool
- (1) VM254 Dusting Brush
- (1) VM258 On-board Tool Caddy
- (1) VM166 Metal Hose Rack

06 Tool Kits

VMTKD

Deluxe Tool Kit

- ORDER # VMTKD



The VMTKD Kit includes the following:

- (1) VMTE Metal Telescopic Central Vacuum Wand
- (1) VM251 Adjustable Carpet/Floor Tool
- (1) VM253 Crevice Tool
- (1) VM256 Upholstery Tool with Brush
- (1) VM252 Floor/Wall Tool
- (1) VM254 Dusting Brush
- (1) VM258 On-board Tool Caddy
- (1) VM166 Metal Hose Rack
- (1) VMCD Deluxe Canvas Tool Caddy

VM458 14-Inch Deluxe Power Brush with Headlight

• ORDER # VM458



Features:

- Electric-powered carpet brush with automatic electronic brush torque control
- Motor overload circuit breaker
- Built-in dry squeegee
- Double-chevron composite brush-roll
- Convenient quick-release pedal
- 14-Inch-wide cleaning path
- Attaches to a VMTC Telescopic Wand

VM179B 12-Inch Air-Driven Turbo Brush

• ORDER # VM179B



Features:

- Vacuum-powered carpet brush for maximum economy
- No electricity required to power brush
- 12-Inch-wide cleaning path
- Attaches to a VMTE Telescopic Wand

VM178 10-Inch Air-Driven Turbo Brush

• ORDER # VM178



Features:

- Vacuum-powered carpet brush for maximum economy
- No electricity required to power brush
- 10-Inch-wide cleaning path
- Attaches to a VMTE Telescopic Wand

08 Tools, Wands & Brushes

VM251

Adjustable Carpet/Floor Tool

- ORDER # VM251

Features:

- Can be used on carpets or floors
- Compatible with VMTE and VMTEP telescopic wands
- Adjustable operating height



VM254

Dusting Brush

- ORDER # VM254

Features:

- Used for vacuum dusting
- Extra-long horsehair bristles
- Compatible with VMTE and VMTEP telescopic wands



VM252

Floor/Wall Tool

- ORDER # VM252

Features:

- Used for cleaning floors and walls
- Compatible with VMTE and VMTEP telescopic wands
- Deluxe horsehair bristles



VM256

Upholstery Tool with Brush

- ORDER # VM256

Features:

- Used for vacuum cleaning car seats and home furniture
- Short nylon bristles
- Compatible with VMTE and VMTEP telescopic wands



VM253

Crevice Tool

- ORDER # VM253

Features:

- Used for cleaning small spaces, baseboards, and around appliances
- Angled head
- Compatible with VMTE and VMTEP telescopic wands
- Pressure-relief slots prevent hose collapse in case of clogging



VM258

On-Board Tool Caddy

- ORDER # VM258

Features:

- Tool caddy clips onto central vacuum wand
- Keeps vacuum tools ready at hand
- Stores up to three vacuum tools
- Compatible with all AirVac central vacuum wands



Tools, Wands & Brushes

09

VMCD

Deluxe Canvas Tool Caddy

- ORDER # VMCD



Features:

- Convenient way to store and transport AirVac tools
- Black canvas construction
- Two large pockets for brushes
- Elastic tool-retaining straps for long tools and wands

VMTC Metal Telescopic Central Vacuum Wand with High-Voltage Cord

- ORDER # VMTC



Features:

- Connects power brush to central vacuum hose
- Compatible with Model VM458 Power Brush ONLY
- Cord management system extends and retracts with wand

VMTE

Metal Telescopic Central Vacuum Wand

- ORDER # VMTE



Features:

- Lightweight metal central vacuum wand
- Compatible with all air-powered turbo carpet brushes
- Compatible with all non-powered AirVac tools and brushes
- Wand extends and retracts for comfort

VMTEP

Plastic Telescopic Central Vacuum Wand

- ORDER # VMTEP



Features:

- Lightweight plastic central vacuum wand
- Compatible with all non-powered AirVac tools and brushes
- Wand extends and retracts for comfort

10 Vacuum Hoses & Hose Accessories

V610PS

Deluxe SuperSystem Central Vacuum Hose

• ORDER # V610PS



Features:

- 30-Foot-long central vacuum hose
- 1-1/4-Inch diameter
- Crush-proof design
- Plugs into VMVP or VMVPL high-voltage wall inlet valves
- No separate cord necessary for brush power
- Variable suction control ring
- Button-release for tool attachment
- Built-in 3-position handle switch for vacuum and power brush control

V510PS

Deluxe Central Vacuum Hose

• ORDER # V510PS



Features:

- 30-Foot-long central vacuum hose
- 1-1/4-Inch diameter
- Crush-proof design
- 6-Foot cord for brush power
- Variable suction control ring
- Button-release for tool attachment
- Built-in 3-position handle switch for vacuum and power brush control

V400S

Central Vacuum Hose

• ORDER # V400S



Features:

- 30-Foot-long central vacuum hose
- 1-3/8-Inch diameter
- Crush-proof design
- Variable suction control ring
- Button-release for tool attachment
- Built-in handle low-voltage switch for vacuum activation control

Vacuum Hoses & Hose Accessories

11

V222

Central Vacuum Hose

- ORDER # V222



Features:

- 30-Foot-long central vacuum hose
- 1-3/8-Inch diameter
- Crush-proof design
- Swivel end with friction fit tool attachment

V361

"Slinky" Central Vacuum Hose

- ORDER # V361



Features:

- Extendable central vacuum hose
- 3-1/2 feet long compressed, 21 feet long extended
- 1-3/8-Inch diameter
- Crush-proof design
- Variable suction control sliding switch
- Wall valve trigger band for vacuum activation control

VM166

Metal Hose Rack

- ORDER # VM166



Features:

- Provides orderly, clean, and out-of-the-way central vacuum hose storage
- Attaches to the wall with two screws
- Chrome finish

12 Vacuum Hoses & Hose Accessories

VM204

Fabric Central Vacuum Hose Cover

- ORDER # VM204



Features:

- 30-Foot-long hose cover
- Fits central vacuum hoses
- Washable
- Protects walls, floors, molding, and trim from scuffing
- Keeps hoses looking new

VM205

Deluxe Padded Fabric Central Vacuum Hose Cover

- ORDER # VM205



Features:

- 30-Foot-long hose cover
- Fits central vacuum hoses
- Protects walls, floors, molding, and trim from scuffing
- Keeps hoses looking new

Note: Will not fit Model V510PS or V610PS hoses

VM700 Deluxe Padded Fabric Central Vacuum Hose Cover

- ORDER # VM700



Features:

- 30-Foot-long hose cover
- Fits central vacuum hoses
- Zipper closure
- Washable
- Protects walls, floors, molding, and trim from scuffing
- Keeps hoses looking new

Automatic Dustpans 13

VMSP

Automatic Dustpan

- ORDER # VMSP (White)
- ORDER # VMSPA (Almond)
- ORDER # VMSPB (Black)



Features:

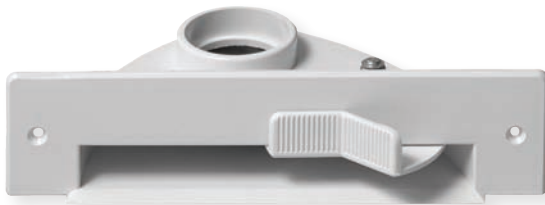
- Sweep dirt directly into central vacuum system
- Ideal for dry-spill areas
- Available in white, almond, and black



VPAN

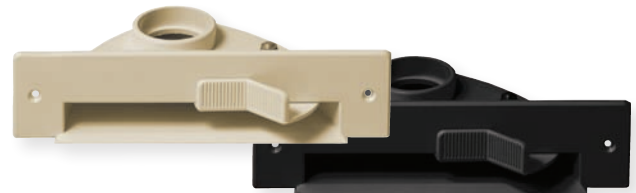
Flush Mount Automatic Dustpan

- ORDER # VPANW (White)
- ORDER # VPANA (Almond)
- ORDER # VPAN (Black)



Features:

- Flush mounting blends into decor
- Sweep dirt directly into central vacuum system
- Ideal for dry-spill areas
- Available in white, almond, and black



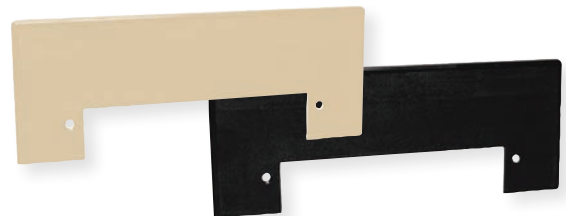
VPANTP

Automatic Dustpan Trim Plate

- ORDER # VPANTPW (White)
- ORDER # VPANTPA (Almond)
- ORDER # VPANTP (Black)

Features:

- Allows access to the automatic dustpan from the cabinet front
- Available in white, almond, and black



14 Wall Inlet Valves & Brackets

VM142-10

Wall Inlet Valve Bracket (10-pack)

- ORDER # VM142-10



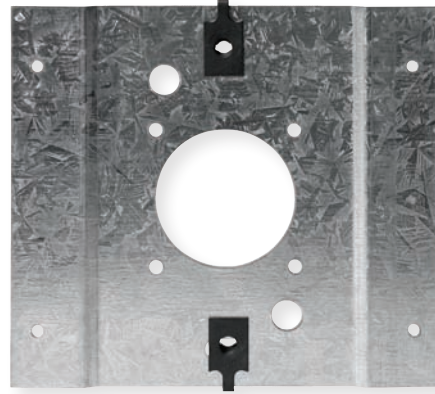
Features:

- Designed for existing construction retrofit installations
- Valve bracket is supported by system pipe and drywall
- Wall inlet valve attaches to the valve bracket with two screws
- 10-Piece bulk pack

VM143-10

Wall Inlet Valve Bracket (10-pack)

- ORDER # VM143-10



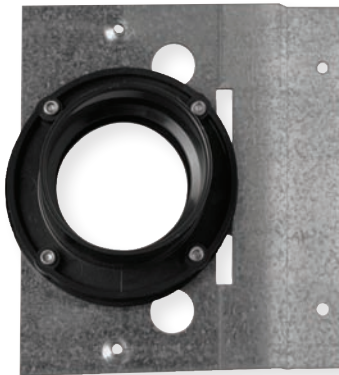
Features:

- Designed for new construction
- Wall bracket for flanged pipe fittings
- Wall inlet valve attaches to the valve bracket with two screws
- 10-Piece bulk pack

VM149

Wall Inlet Valve Bracket

- ORDER # VM149



Features:

- Designed for new construction installations
- Valve bracket is supported by wall stud
- Wall inlet valve attaches to the valve bracket with two screws

VM195

Wall Inlet Valve

- ORDER # VM195 (White)
- ORDER # VM195A (Almond)
- ORDER # VM195B (Black)



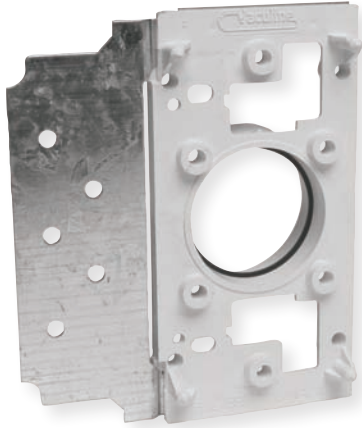
Features:

- Spring-loaded access cover for vacuum hose connection
- Seals the vacuum system when not in use
- Sensing pins control the vacuum unit's power via the hose's trigger ring
- Available in white, almond, and black

VM241

Wall Inlet Valve Bracket (15-pack)

- ORDER # VM241

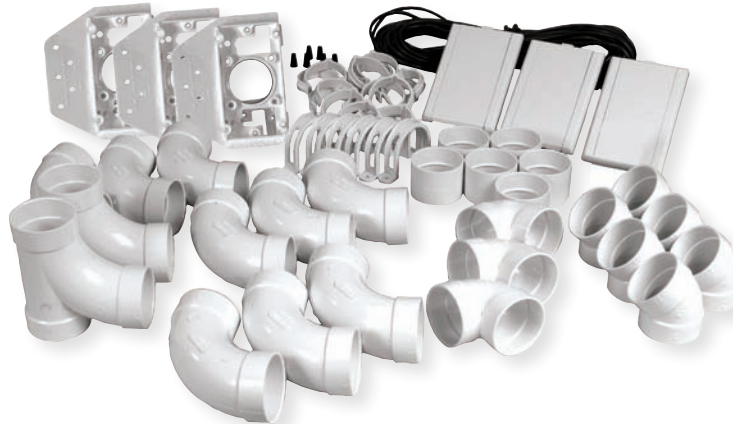
**Features:**

- Designed for new construction installations
- Valve bracket is supported by wall stud
- Wall inlet valve attaches to the valve bracket with two screws
- Compatible with low-voltage wall inlet valves

VM3VK

3-Wall Inlet Valve Kit

- ORDER # VM3VK



The Model VM3VK 3-wall Inlet Valve Kit is a selection of common central vacuum fittings, couplings, wire, wall inlet valves, and wall inlet brackets necessary for a typical 3-valve central vacuum system installation. The three wall inlet valves are white in color. The VM3VK Kit includes the following:

- 60 feet of low-voltage control wire
- (15) VM450 Quick Clips
- (9) VM103 90-degree Sweep Fittings
- (2) VM106 90-degree Single-sweep 3-way "T" Fittings
- (6) VM147 Pipe Straps with Wire Traps
- (6) VM112 45-degree Short Elbow Fittings
- (6) VM102 Straight Coupling Fittings
- (3) VM104 90-degree Short Elbow Fittings
- (3) Plastic Wall Inlet Valve Brackets
- (3) VM195 Wall Inlet Valves (White)

Features:

- Kit contains common central vacuum fittings and valves
- White-colored wall inlet valves
- Includes most components needed for a typical 3-valve installation
- Includes wire and wire clips
- PVC pipe not included

16 Wall Inlet Valves & Brackets

VM495

Wall Inlet Valve Trim Plate

- ORDER # VM495



Features:

- Mounts under wall inlet valve
- Hides irregular wall cut-outs
- Makes a professional, clean-looking installation

VM612

High-Voltage Wall Inlet Valve Rough-In Kit

- ORDER # VM612



Features:

- Designed for new construction installations
- Valve bracket is supported by wall stud
- Wall inlet valve attaches to the valve bracket with two screws
- Designed for high-voltage wall inlet valves

VML195

Lighted Wall Inlet Valve

- ORDER # VML195 (White)
- ORDER # VML195A (Almond)



Features:

- 3-Function service indicator shows central vacuum status with AVP series power units
- Spring-loaded access cover for vacuum hose connection
- Seals the vacuum system when not in use
- Sensing pins control the vacuum unit's power via the hose's trigger ring
- Available in white and almond

VMVP

High-Voltage Wall Inlet

- ORDER # VMVP (White)
- ORDER # VMVPA (Almond)



Features:

- Spring-loaded access cover for vacuum hose connection
- Seals the vacuum system when not in use
- Sensing pins control the vacuum unit's power via the hose's trigger ring
- High-voltage socket supplies power for electric-driven carpet brushes
- Available in white and almond

Wall Inlet Valves & Brackets

17

VMVP3K

3-Wall High-Voltage Inlet Valve Kit

- ORDER # VMVP3K (White)
- ORDER # VMVP3KA (Almond)



The VMVP3K 3-wall High-voltage Inlet Valve Kit is a selection of common central vacuum fittings, couplings, wire, wall inlet valves, and wall inlet brackets necessary for a typical high-voltage 3-valve central vacuum system installation. The three wall inlet valves are white in color, and an almond-colored kit is also available (VMVP3KA).

The VMVP3K Kit includes the following:

- 60 feet of low-voltage control wire
- (15) VM450 Quick Clips
- (9) VM103 90-degree Sweep Fittings
- (2) VM106 90-degree Single-sweep 3-way "T" Fittings
- (6) VM147 Pipe Straps with Wire Traps
- (6) VM112 45-degree Short Elbow Fittings
- (6) VM102 Straight Coupling Fittings
- (3) VM104 90-degree Short Elbow Fittings
- (3) VM612 High-voltage Wall Inlet Rough-in Kits
- (3) VMVP High-voltage Wall Inlet Valves (White)

Features:

- Kit contains common central vacuum fittings and valves
- White or almond-colored wall inlet valves
- Includes most components needed for a typical high-voltage 3-valve installation
- Includes wire and wire clips
- PVC pipe not included

VMVPL

Lighted High-Voltage Wall Inlet Valve

- ORDER # VMVPL (White)
- ORDER # VMVPLA (Almond)



Features:

- Spring-loaded access cover for vacuum hose connection
- 3-Function service indicator shows central vacuum status with AVP series power units
- Seals the vacuum system when not in use
- Sensing pins control the vacuum unit's power via the hose's trigger ring
- High-voltage socket supplies power for electric-driven carpet brushes
- Available in white and almond

18 PVC Pipe & Fittings

VM101-8 Central Vacuum PVC Pipe (8-pack)

- ORDER # VM101-8
- Central vacuum-grade, 2-inch outside diameter, 8-foot-long PVC pipe

VM101L-10 Central Vacuum PVC Pipe (10-pack)

- ORDER # VM101L-10
- Central vacuum-grade, 2-inch outside diameter, 10-foot-long PVC pipe

VM101-280 Central Vacuum PVC Pipe Crate (280-pack)

- ORDER # VM101-280
- Central vacuum-grade, 2-inch outside diameter, 8-foot-long PVC pipe

VM101L-200 Central Vacuum PVC Pipe Crate (200-pack)

- ORDER # VM101L-200
- Central vacuum-grade, 2-inch outside diameter, 10-foot-long PVC pipe



All pipes & fittings
are I.A.P.M.O
certified

VM102 Straight Coupling Fitting

- ORDER # VM102



VM103 90-Degree Sweep Fitting

- ORDER # VM103



VM104 90-Degree Short Elbow Fitting

- ORDER # VM104



VM105 90-Degree Double-Sweep 3-Way "T" Fitting

- ORDER # VM105



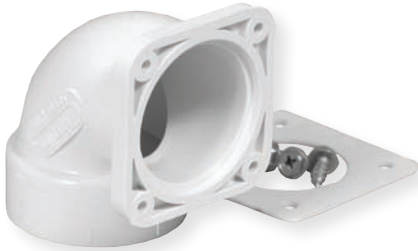
VM106 90-Degree Single-Sweep 3-Way "T" Fitting

- ORDER # VM106



VM107 90-Degree
Flanged Wall Adapter Fitting

• ORDER # VM107



VM108 90-Degree
Flanged Thin Wall Adapter Fitting

• ORDER # VM108



VM111
90-Degree Flanged Wall "T" Fitting

• ORDER # VM111



VM112 45-Degree
Short Elbow Fitting

• ORDER # VM112



VM113
45-Degree Short Spigot Fitting

• ORDER # VM113



VM114
45-Degree "Y" Fitting

• ORDER # VM114



VM115 90-Degree
Sweep Spigot Fitting

• ORDER # VM115



VM117
Straight Flanged Adapter Fitting

• ORDER # VM117



VM119
Faceplate Extension Fitting

• ORDER # VM119



20 PVC Pipe & Fittings

VM137

Pipe Cap

- ORDER # VM137



VM138

Pipe Collar

- ORDER # VM138



The Model VM138 Pipe Collar is a 2-inch inside diameter white PVC collar. This collar is used to finish-out exposed central vacuum system pipe where it passes through the wall. The collar slides over the pipe to hide the hole cut in the wall. A slot is provided in the collar for passing the central vacuum control wire.

VM147

Pipe Strap with Wire Trap

- ORDER # VM147



The Model VM147 Pipe Strap with Wire Trap is a white PVC pipe strap that is used to attach central vacuum system PVC pipe to wood joists or studs. The pipe strap has two screw holes for mounting. A plastic clip on the pipe strap can be used as a wire trap to retain the low-voltage central vacuum system control wire that runs along the piping.

VM207

30-Degree Short Elbow Fitting

- ORDER # VM207



VM450

Quick Clip

- ORDER # VM450



The Model VM450 Quick Clip is a white PVC pipe clip used to retain the central vacuum system low-voltage control wire that runs along the system piping. The clip snaps onto the 2-inch pipe and has a notch designed to capture the wire.

Steel Pipe & Fittings 21

VM128

6-Inch Steel Tubing

- ORDER # VM128



VM129 90-Degree Steel Street Elbow Fitting

- ORDER # VM129



VM130

90-Degree Steel Elbow Fitting

- ORDER # VM130



VM131

Straight Steel Coupling

- ORDER # VM131



VM132 45-Degree Steel Sweep Elbow Fitting

- ORDER # VM132



VM133

10-Foot Steel Tubing

- ORDER # VM133



VM139

Steel Pipe Sleeve

- ORDER # VM139



The Model VM139 Steel Pipe Sleeve is a short length of heat-shrink tubing that can be used to seal two lengths of central vacuum steel exhaust tubing or seal steel exhaust tubing to a Model VM136 Exhaust Vent Cap.

22 Installation Accessories

VM118-100

Nail Guard Accessory (100-pack)

- ORDER # VM118-100



The Model VM118-100 Nail Guard Accessory (100-pack) is a shield that can be nailed on a wall stud over the area where the central vacuum piping passes. The shield protects the central vacuum piping from getting punctured by drywall screws and nails during construction.

VM120-24

Joint Cement (24-pack)

- ORDER # VM120-24



VM123 Flexible Central Vacuum Hose (10-inch)

- ORDER # VM123



The Model VM123 Flexible Central Vacuum Hose (10-inch) is a 10-inch length of wire-reinforced 2-inch diameter flexible hose. This hose is typically used to connect the central vacuum power unit intake port to the system's main vacuum tube. Use Model VM124 Hose Clamps to connect the hose.

VM123L Flexible Central Vacuum Hose (10-foot)

- ORDER # VM123L



The Model VM123L Flexible Central Vacuum Hose (10-foot) is a 10-foot length of wire-reinforced 2-inch diameter flexible hose. This hose is typically used to connect the central vacuum power unit intake port to the system's main vacuum tube and can be cut to the length required. Use Model VM124 Hose Clamps to connect the hose.

VM124 Hose Clamp

- ORDER # VM124



VM136 Exhaust Vent Cap

- ORDER # VM136



The Model VM136 Exhaust Vent Cap is a white PVC cap with three louvers designed to terminate the central vacuum's exhaust system. The exhaust system routes the exhaust air from the central vacuum power unit to outside the residence. When the central vacuum system is off, the vent cap's louvers are closed, preventing rain and insects from entering the exhaust system. When the central vacuum system is running, the louvers automatically open to pass the exhaust air to the outside. The exhaust vent cap mounts to the wall with four screws and connects to the system's steel or PVC exhaust tubing.

Installation Accessories 23

VM181

Vacuum Gauge

- ORDER # VM181



VM186

Pipe Reamer

- ORDER # VM186



VM196

Valve Bracket Plaster Guard

- ORDER # VM196



VM198

Cover Plate

- ORDER # VM198



The Model VM196 Valve Bracket Plaster Guard is a shield that can be placed over open wall inlets to prevent plaster and wallboard mud from entering the wall inlet during construction.

The Model VM198 Cover Plate is a white cover plate that screws to a wall inlet valve bracket for new construction or future system expansion. The plate seals the wall valve bracket.

24 Replacement Parts

VM601

Secondary Foam Filter

• ORDER # VM601

Features:

- 8-Inch by 8-inch replacement foam filter
- Fits discontinued AirVac power units



226117

Filter Bag

• ORDER # 226117

Features:

- Fits AV2500, AV3500, AV4500, AV5500, ZV3500, AVP, and AVR AirVacs
- Replaces part number 112996-5



VM600

Secondary Foam Filter

• ORDER # VM600

Features:

- 6-Inch by 6-inch replacement foam filter
- Fits discontinued AirVac power units



VM505

Disposable Paper Vacuum Bags and Filter (three bags, one filter)

• ORDER # VM505

Features:

- Three bags in a package
- Fits BV2000 AirVac power unit
- Disposable paper bag
- Disposable filter



VMP600-6

Disposable Paper Vacuum Bags (6-pack)

• ORDER # VMP600-6

Features:

- Six bags in a package
- Bags fit Platinum Series AirVac power units
- Disposable paper bag
- Slide-gate opening seals bag for disposal



VMMUFS

Noise-Reducing Exhaust Muffler

• ORDER # VMMUFS

Features:

- Reduces annoying central vacuum system exhaust noise
- Installs between vacuum and exhaust system piping



VM502

Disposable Paper Vacuum Bags (6-pack)

• ORDER # VM502

Features:

- Six bags in a package
- Bags fit Blue and Gold Series AirVac power units
- Bags fit many older AirVac power units
- Disposable paper bag



Filter & Bag Compatibility Table

REPLACEMENT PART

CENTRAL VACUUM MODEL

| | 226117 FILTER BAG | VM502 PAPER BAG | VM505 DISPOSABLE BAG | VM600 FILTER | VM601 FILTER | VMP600-6 DISPOSABLE BAG |
|----------|----------------------|--------------------|-------------------------|--------------|--------------|----------------------------|
| AV400 | | | | ● | | |
| AV410 | | | | ● | | |
| AV480 | | | | ● | | |
| AV550 | | | | | ● | |
| AV850 | | | | | ● | |
| AV2500 | ● | | | | | |
| AV3500 | ● | | | | | |
| AV4500 | ● | | | | | |
| AV5500 | ● | | | | | |
| AVP3000 | ● | | | | | ● |
| AVP7500 | ● | | | | | ● |
| AVP12000 | ● | | | | | ● |
| AVP24000 | ● | | | | | ● |
| AVR3000 | ● | | | | | |
| AVR7500 | ● | | | | | |
| AVR12000 | ● | | | | | |
| AVR24000 | ● | | | | | |
| BV2000 | | | ● | | | |
| FX1000 | | ● | | | | |
| FX1100 | | ● | | | | |
| FX2000 | | ● | | | | |
| FX3000 | | ● | | | | |
| FX400 | | ● | | | | |
| FX4000 | | ● | | | | |
| FX500 | | ● | | | | |
| FX500A | | ● | | | | |
| FX5000 | | ● | | | | |
| FX675 | | ● | | | | |
| FX675A | | ● | | | | |
| FX725 | | ● | | | | |
| FX775 | | ● | | | | |
| FX800 | | ● | | | | |
| FX900 | | ● | | | | |
| NTC600 | | ● | | | | |
| NTM285 | | ● | | | | |
| NTS300 | | ● | | | | |
| NTSP700 | | ● | | | | |
| SB200L | | ● | | | | |
| TC600L | | ● | | | | |
| TM285L | | ● | | | | |
| TSP300L | | ● | | | | |
| TSP700L | | ● | | | | |
| VM110 | | | | ● | | |
| VM180 | | | | ● | | |
| VM212 | | | | | ● | |
| ZV3500 | ● | | | | | |
| ZX5800 | | ● | | | | |
| ZX6000 | | ● | | | | |
| ZX7000 | | ● | | | | |
| ZX8000 | | ● | | | | |

26 Linear Training

Training Outline & Types

Technical Services is the group within Linear LLC that administers Continuing Education Unit (CEU) activities, courses, and programs. Technical training ensures the education and meets the goals of the dealers, distributors, and others who sell the Linear LLC branded products.

The technical training manager reviews the policies and procedures and ensures they meet accreditation requirements for CEUs. Linear LLC accredits their training through the National Burglar & Fire Alarm Association (NBFAA) service of the National Training School. The review process for every program occurs every two years at a minimum.

Linear will ensure the training provides adequate resources to support a positive learning environment. Instructors will be available to provide assistance and support to students.

When students meet the requirements for satisfactory completion of the training program, they are issued a certificate that indicates the title of the program, the name of the instructor, and the number of CEUs for the program. Training in Texas will result in an additional form with the instructors' numbers annotated for state requirements.

Linear maintains the records for approximately one year and can reissue certificates if desired. Information collected during training is only for the use of documenting students attending class and is not sold, released, or transferred for any other purposes.

Linear training is provided by qualified personnel with many years of experience in the field and competence in their topic of instruction. They also have knowledge and skill in instructional methods and learning processes. Feedback is encouraged and collected. Instruction is provided with no discrimination, and the trainers are not compensated for any activity other than for classroom instruction.

Linear offers three types of training through leamlinear.com

Type 1: Instructor Lead Training—On-Site Training

We have product trainers and a sales management team who travel the U.S. to provide training at your facility or at a local distributor. This is a more traditional, classroom-style training option.

Linear programs are divided into four phases of courses. Many of Phase 3 and Phase 4 classes are NTS-approved for installers needing Continuing Education Units (CEUs).



Phase 1: Marketing and Investment Strategies—This presents how our products fit into the market segment. It will outline market share and profitability while showing projected future growth and outlook of product segments. It will show how to leverage your investment into our broad product offerings and maximize profitability.

Phase 2: Sales Training—This covers creating the right expectations for your customers. It goes over qualification questions to ask in order to qualify design to meet customer expectations. It also explains features and advantages by product, enabling you to differentiate products in a way your customer will understand.

Phase 3: Design and Installation Training—This is a brief product overview and explanation of installation and rough-in guidelines. The owner's manuals are reviewed (more than just packing material!). Configuration and system testing is illustrated. Instruction is given to show the customer how to use their new products in their home.

Phase 4: Troubleshooting and Advanced Theory—Very specific installation techniques are explained. Navigating troubleshooting guides and EMI and RFI influences are explored. Chronic problem installations and their root causes, as well as steps required that help avoid future call outs, are illustrated.

Type 2: Instructor Lead Training—Computer-Based Training
A product trainer remotely teaches a course using teleconferences and computer software to present the material. Since a live instructor is leading the training, these classes are scheduled.

Linear offers the ability to take most of the on-site training presentations over the Internet, with an instructor leading the training.

Type 3: Self-Paced Training—Computer-Based

This is similar to taking online college classes. From the convenience of either home or office, you can take classes at your own pace and return to previous sessions should you need to stop mid-class.

If you have any questions, feel free to email at techsupport@linearcorp.com or call **1-800-421-1587** and ask for our training manager.

Linear's Technical Services Support



Linear's Technical Services Department provides telephone support for our expanding product line. The group supports nearly 1,000 products in various types of installations and applications. Application engineers can assist dealers and installers with their technical questions regarding every Linear product.

The application engineers answer questions regarding equipment installation, programming, system design, troubleshooting, and inter-system compatibility. Questions could be about radio controls, security systems, access controls, door operators, gate operators, audio or video equipment, and accessories. Often, installers simply need fast help with their installation issues so they can complete the job and continue on to the next installation. Linear's quality and professional technical support staff provides that service.

The new extended Technical Services Department telephone service hours (5:00 AM to 4:30 PM Pacific Time) will be of value to nationwide installers and company representatives alike. West Coast callers will be able to call as early as 5:00 AM local time, and East Coast callers will be able to call as late as 7:30 PM local time.

Linear Technical Services provides direct access to the people who know Linear products best. To speak with a Linear expert, call 1-800-421-1587 and press 3.

28 Manufacturing Facilities

State-of-the-Art Manufacturing Facility



Sound plans implemented with quality products and solutions to support them are critical to success in today's competitive global business environment. With a state-of-the-art manufacturing facility in China, Linear uses industry-leading manufacturing technologies that enable production of quality products that consistently raise the standard in home technology and provide a value you can depend on in today's competitive marketplace.

High-performance production tools, advanced technologies and techniques in design and testing, integrated circuitry, microchip, and surface mount technology, as well as the latest electronic component assembly and quality assurance techniques are features you can depend on from Linear manufacturing. Linear's Hong Kong manufacturing operation boasts a staff of more than 1,300 and is ISO 9001:2000 quality system certified.

West & East Distribution Centers



To streamline order fulfillment and shorten delivery time for Linear distributors and dealers, Linear LLC maintains two fully stocked regional distribution facilities in Vista, California, and Summerville, South Carolina.

Linear's Western Distribution Center has 90,000 square feet with 19 shipping docks. Linear's Eastern Distribution Center boasts 175,000 square feet with 25 shipping docks and is the third largest UPS shipper in the Charleston, South Carolina, area.

Both warehouse locations are completely equipped with shipping, receiving, and quality control facilities, and they each stock tens of thousands of Linear products for security, entry systems, communications, audio/video/data, central vacuum systems, and personal emergency response. Each warehouse team receives dozens of cargo containers each month, processes hundreds of orders daily, and ships thousands of packages with Linear goods to worldwide destinations each day.

30 Index

| PRODUCT | ORDER # | PAGE |
|--------------------------|------------|------|
| 226117 | 226117 | 24 |
| AVP12000 Platinum Series | AVP12000 | 2 |
| AVP24000 Platinum Series | AVP24000 | 2 |
| AVP3000 Platinum Series | AVP3000 | 2 |
| AVP7500 Platinum Series | AVP7500 | 2 |
| AVR12000 Red Series | AVR12000 | 3 |
| AVR24000 Red Series | AVR24000 | 3 |
| AVR3000 Red Series | AVR3000 | 3 |
| AVR7500 Red Series | AVR7500 | 3 |
| V222 | V222 | 11 |
| V361 | V361 | 11 |
| V400S | V400S | 10 |
| V510PS | V510PS | 10 |
| V610PS | V610PS | 10 |
| VM101-280 | VM101-280 | 18 |
| VM101-8 | VM101-8 | 18 |
| VM101L-10 | VM101L-10 | 18 |
| VM101L-200 | VM101L-200 | 18 |
| VM102 | VM102 | 18 |
| VM103 | VM103 | 18 |
| VM104 | VM104 | 18 |
| VM105 | VM105 | 18 |
| VM106 | VM106 | 18 |
| VM107 | VM107 | 19 |
| VM108 | VM108 | 19 |
| VM111 | VM111 | 19 |
| VM112 | VM112 | 19 |
| VM113 | VM113 | 19 |
| VM114 | VM114 | 19 |
| VM115 | VM115 | 19 |
| VM117 | VM117 | 19 |
| VM118-100 | VM118-100 | 22 |
| VM119 | VM119 | 19 |
| VM1200S | VM1200S | 5 |
| VM120-24 | VM120-24 | 22 |
| VM123 | VM123 | 22 |
| VM123L | VM123L | 22 |
| VM124 | VM124 | 22 |
| VM128 | VM128 | 21 |
| VM129 | VM129 | 21 |
| VM130 | VM130 | 21 |
| VM131 | VM131 | 21 |
| VM132 | VM132 | 21 |
| VM133 | VM133 | 21 |
| VM136 | VM136 | 22 |
| VM137 | VM137 | 20 |
| VM138 | VM138 | 20 |
| VM139 | VM139 | 21 |
| VM142-10 | VM142-10 | 14 |
| VM143-10 | VM143-10 | 14 |
| VM147 | VM147 | 20 |
| VM149 | VM149 | 14 |
| VM166 | VM166 | 11 |
| VM178 | VM178 | 7 |
| VM179B | VM179B | 7 |
| VM181 | VM181 | 23 |
| VM186 | VM186 | 23 |
| VM195 (Almond) | VM195A | 14 |
| VM195 (Black) | VM195B | 14 |
| VM195 (White) | VM195 | 14 |
| VM196 | VM196 | 23 |
| VM198 | VM198 | 23 |
| VM204 | VM204 | 12 |
| VM205 | VM205 | 12 |
| VM207 | VM207 | 20 |
| VM2200DS | VM2200DS | 4 |
| VM241 | VM241 | 15 |
| VM251 | VM251 | 8 |
| VM252 | VM252 | 8 |
| VM253 | VM253 | 8 |
| VM254 | VM254 | 8 |
| VM256 | VM256 | 8 |
| VM258 | VM258 | 8 |
| VM3VK | VM3VK | 15 |
| VM4200DS | VM4200DS | 4 |
| VM450 | VM450 | 20 |
| VM458 | VM458 | 7 |
| VM495 | VM495 | 16 |

| PRODUCT | ORDER # | PAGE |
|-----------------|----------|------|
| VM502 | VM502 | 24 |
| VM505 | VM505 | 24 |
| VM600 | VM600 | 24 |
| VM601 | VM601 | 24 |
| VM612 | VM612 | 16 |
| VM700 | VM700 | 12 |
| VMCD | VMCD | 9 |
| VMGAR | VMGAR | 5 |
| VML195 (Almond) | VML195A | 16 |
| VML195 (White) | VML195 | 16 |
| VMMUFS | VMMUFS | 24 |
| VMP600-6 | VMP600-6 | 24 |
| VMSP (Almond) | VMSPA | 13 |
| VMSP (Black) | VMSPB | 13 |
| VMSP (White) | VMSP | 13 |
| VMTC | VMTC | 9 |
| VMTE | VMTE | 9 |
| VMTEP | VMTEP | 9 |
| VMTKD | VMTKD | 6 |
| VMVP (Almond) | VMVPA | 16 |
| VMVP (White) | VMVP | 16 |
| VMVP3K (Almond) | VMVP3KA | 17 |
| VMVP3K (White) | VMVP3K | 17 |
| VMVPL (Almond) | VMVPLA | 17 |
| VMVPL (White) | VMVPL | 17 |
| VPAN (Almond) | VPANA | 13 |
| VPAN (Black) | VPAN | 13 |
| VPAN (White) | VPANW | 13 |
| VPANTP (Almond) | VPANTPA | 13 |
| VPANTP (Black) | VPANTP | 13 |
| VPANTP (White) | VPANTPW | 13 |

Linear

Central Vacuum Solutions

Linear LLC 1950 Camino Vida Roble, Ste.150, Carlsbad, CA 92008 USA
1 800 421 1587 / linearcorp.com

Linear[®]
Building On Innovation.

Copyright 2012, Linear LLC P/N 228656 B Printed in China